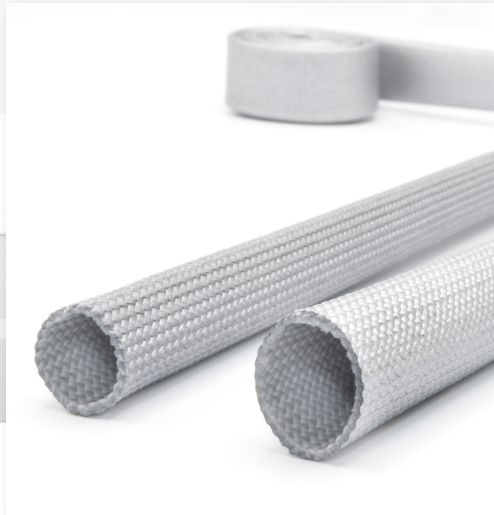


# POLYCRYL PAC10 AL



This is an insulating sleeving impregnated with acrylic, containing heat reflecting aluminium pigment. The aluminium impregnation reflects radiating heat and the polyester braid provides excellent insulating and cut-through properties.

**Material:** Polyester yarn, acrylic and aluminium pigments.

**Temperature:** -70°C to +180°C. (3000 hours) Peaks at +200°C  
(Automotive Market)

**Flammability:** ≤ 100 mm/min

**Application:**



Flammability



Thermal  
Protection



Electrical  
Insulation

**Standard Colour:** Aluminium.



innovative covering solutions

## TECHNICAL CHARACTERISTICS

Property	Test	Result	
Ageing Resistance	Bending after heating IEC 60684-2 Clause 13 7 days at +250°C	No cracking or detachment of coating shall be visible.	
Abrasion Resistance	∅ 0,5 mm, piano wire abrader, 1 kg weight, 20 mm amplitude, 55 ±5 cycles/min.	30.000 cycles minimum	
Dielectric Strength	IEC 60684- 250 mm. Inst. B / D Central Value (kV)	Minimum	Average
		0.6	0.8
	IEC 60684- 250 mm. Inst. B / D Lowest Value (kV)	0.5	0.7
	UL 1441- 25 mm. Inst. B / D (kV)	0.8	1.0
Flammability	FMVSS 302	≤ 100 mm/min	
Cold Resistance	Bending at low temperature IEC60684-2 Clause 14	No cracking or detachment of coating shall be visible after bending at -70°C	
Longitudinal Change	IEC 60684-2 Clause 9 20 minuts at +180°C ±3°C	5% maximum	
Thermal Insulation	SAE J2302	T emitter: +482°C, time: 1 h, distance: 25 mm Thermal efficiency (°C): > +15°C	
Chemical Resistance	Simulation of real operating conditions	Compatible with most insulating varnishes	

## DIMENSIONS

Reference	Nominal Bore (mm)	Bore Tolerance (mm)	Minimum Wall Thickness (mm)	Standard Packaging (m)
PAC10AL005	0.5	NA	NA	400
PAC10AL010	1.0	+0.30	0.40	300
PAC10AL015	1.5	+0.30	0.40	300
PAC10AL020	2.0	+0.30	0.40	300
PAC10AL025	2.5	+0.30	0.40	200
PAC10AL030	3.0	+0.30	0.40	200
PAC10AL035	3.5	+0.30	0.40	200
PAC10AL040	4.0	+0.30	0.40	200
PAC10AL050	5.0	+0.30	0.60	200
PAC10AL060	6.0	+0.30	0.60	100
PAC10AL070	7.0	+0.30	0.60	100
PAC10AL080	8.0	+0.50	0.60	100
PAC10AL090	9.0	+0.50	0.60	100
PAC10AL100	10.0	+0.50	0.60	100
PAC10AL110	11.0	+0.50	0.70	100
PAC10AL120	12.0	+0.50	0.60	100

NOTE: Standard Colour: Aluminium

Other diameters and colours supplied upon request.

Colour tone may vary. This does not affect technical properties of sleeve.

## PACKAGING

Coils  
Cut lengths upon request

## SPECIFICATIONS

IEC 60684  
UL 1441  
FMVSS 302  
SAE J2302

This information and data is believed to be accurate and reliable. Relais places at your disposal the technical information necessary for the correct use of our products and offer the possibility of simulating in our laboratory the conditions of many applications, in order to advise on the suitability of our products. Relais reserves the right to modify characteristics with the aim of improving the product and adapting it to the requirements of the market. Material Safety Data Sheet available.